



The importance of pre-press and workflow automation

Geert Van Damme

Managing Director

September 27th 2019

What is CERM (booth 6A42) ?

- MIS/ERP software for the printing industry, specialized in roll to roll
 - more pre-programmed than a generic ERP (SAP, MS Dynamics, ...) so less implementation effort ...
 - self adhesive labels, tickets, shrink sleeves, piggy bags, bookletlabels, pouches, ...
 - continuously evolving (2 new versions per year)
- Owned by Heidelberg and they distribute the software for Commercial Print
- Recently added sheetfed labels as a 3rd specialization
- Our mission is to increase your
 - Service
 - Quality
 - Productivity
- By collaborating with shop floor partners

HEIDELBERG

M P S
PRINTING PRODUCTIVITY

AVT.

ROTO METRICS.

tilia labs



GREEN BAY
PACKAGING

WLE

abg
International

durst

RITRANA
self-adhesive materials



HP Indigo
Business Partner

Accraply

KOCHER
+ BECK

CHILI
publish

CERM

XEIKON

HYBRID
SOFTWARE

inspiring collaboration

sappi

wink.
You cut, we care.

GSE Dispensing

ESKO

DOMINO

grafotronic

HERMA
Coating your success

SCANSYS



ROTOCONTROL
your finishing partner



CONSIGNOR

OneVision
On Paper. Online. On Time.

FILELINX

FÜLL
Dispensing Systems

gallus

SCREEN



24 - 27 September • Brussels
**LABELXPO
EUROPE 2019**
www.labelexpo-europe.com

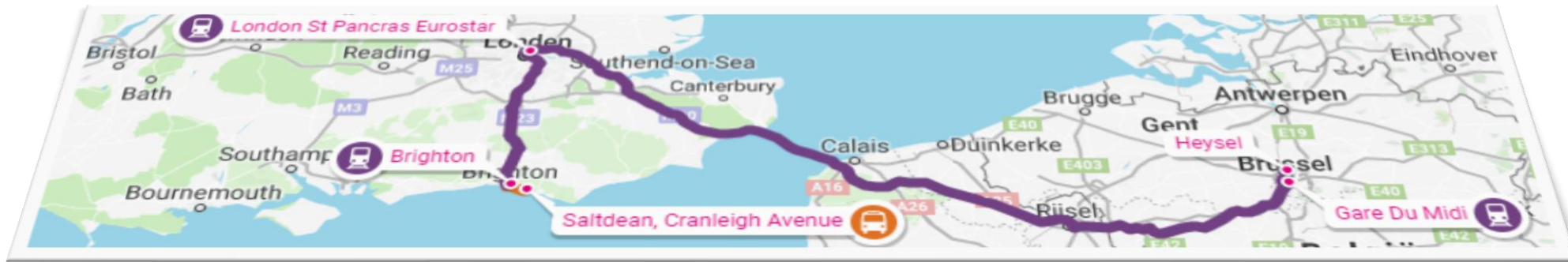
My task in 20 minutes today:

- The nature and importance of **workflow** automation
- The role of MIS automation tools in **digital printing**
- Integration with **quality and inspection**



WHY ? (an example out of your daily life)

- You want to travel to LabelExpo from Saltdean in the UK



- You need a bus, 2 trains and a metro (rome2rio.com)
- Then you need to book tickets on 3 websites (type 3 times your name, pay 3 times, accept cookies 3 times, ...)
- When 1 is delayed, the others are not informed

So in your pre-press workflow we do better !

- A customer can create a new product on a Web-portal
 - Product is in the MIS/ERP database
 - Product is in the Prepress Workflow database
- A customer can upload a product Artwork-file on the same Web-portal
 - Artwork is automatically preflighted and manual quality-check is possible
 - Soft-proof document is automatically created
 - Customer is informed and can approve online
- All are informed about the status, no retyping, no copying
- Automatic procedures can take over manual work





- Create data (product)
- Share data
 - Artwork
 - Softproof
- Exchange statuses
 - Waiting for files
 - Files arrived
 - Preflight OK
 - Softproof available
 - Softproof sent
 - Approved

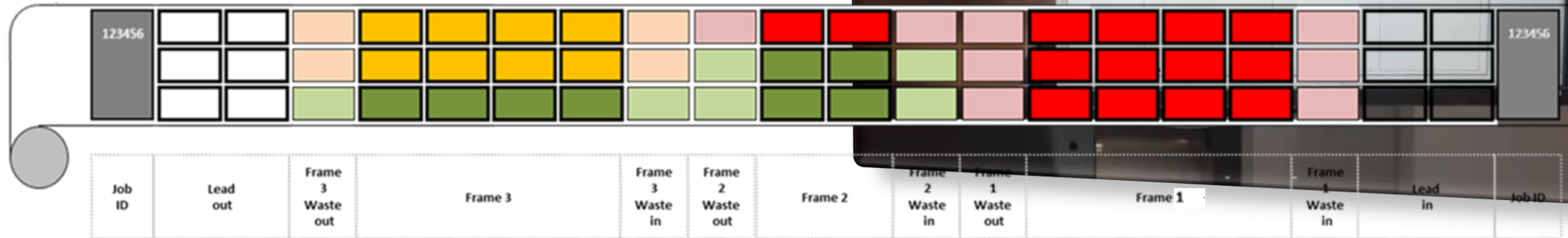
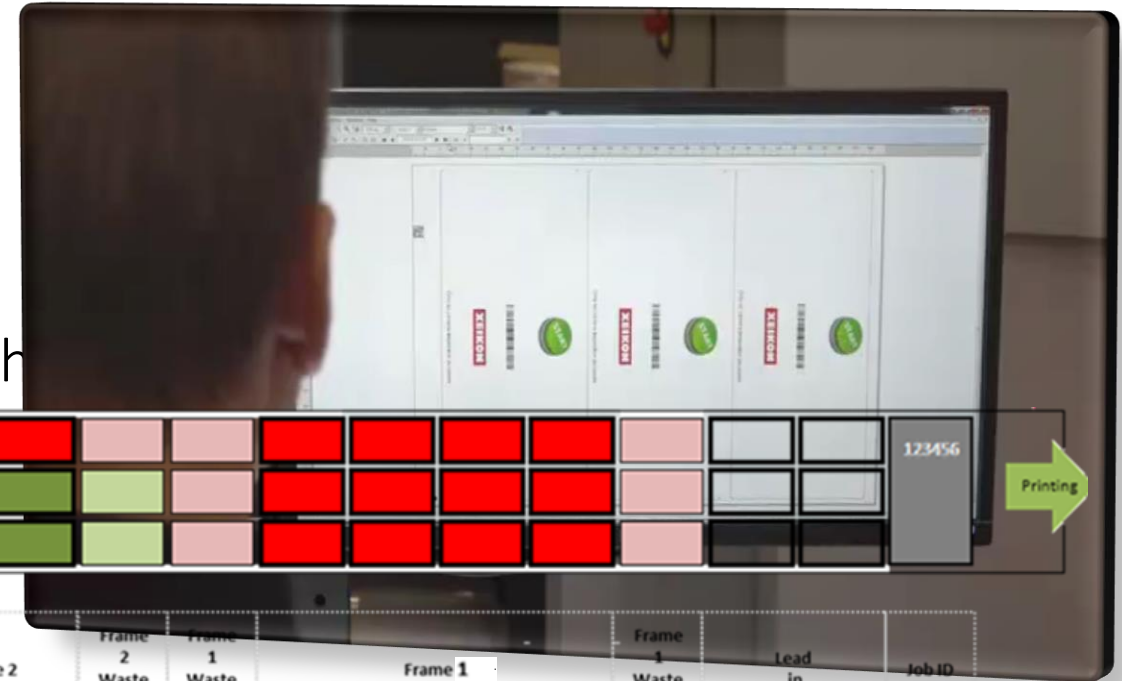
So in job preparation for digital

- A customer orders a series of 'similar' products
- Quantities : 6.000, 4.000, 2.000
 - ERP/MIS will decide on flexo or digital based on **cost**
 - ERP/MIS can combine in lanes to improve winding (**ganging**)



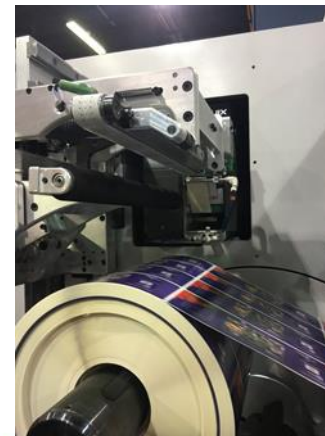
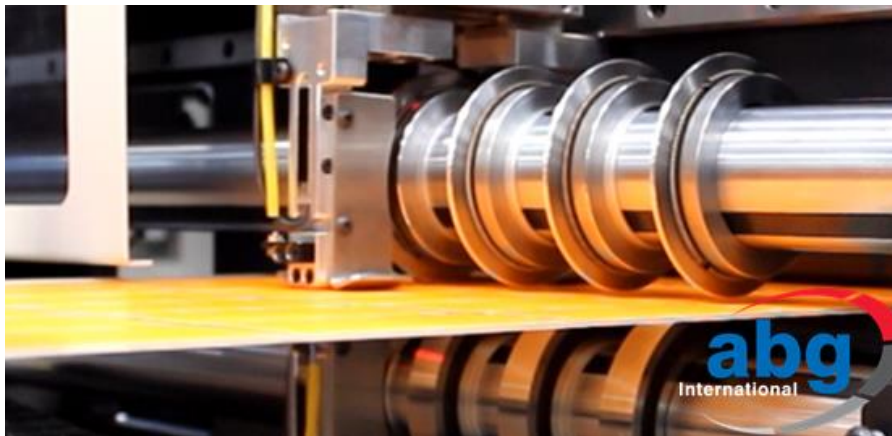
So in job preparation for digital

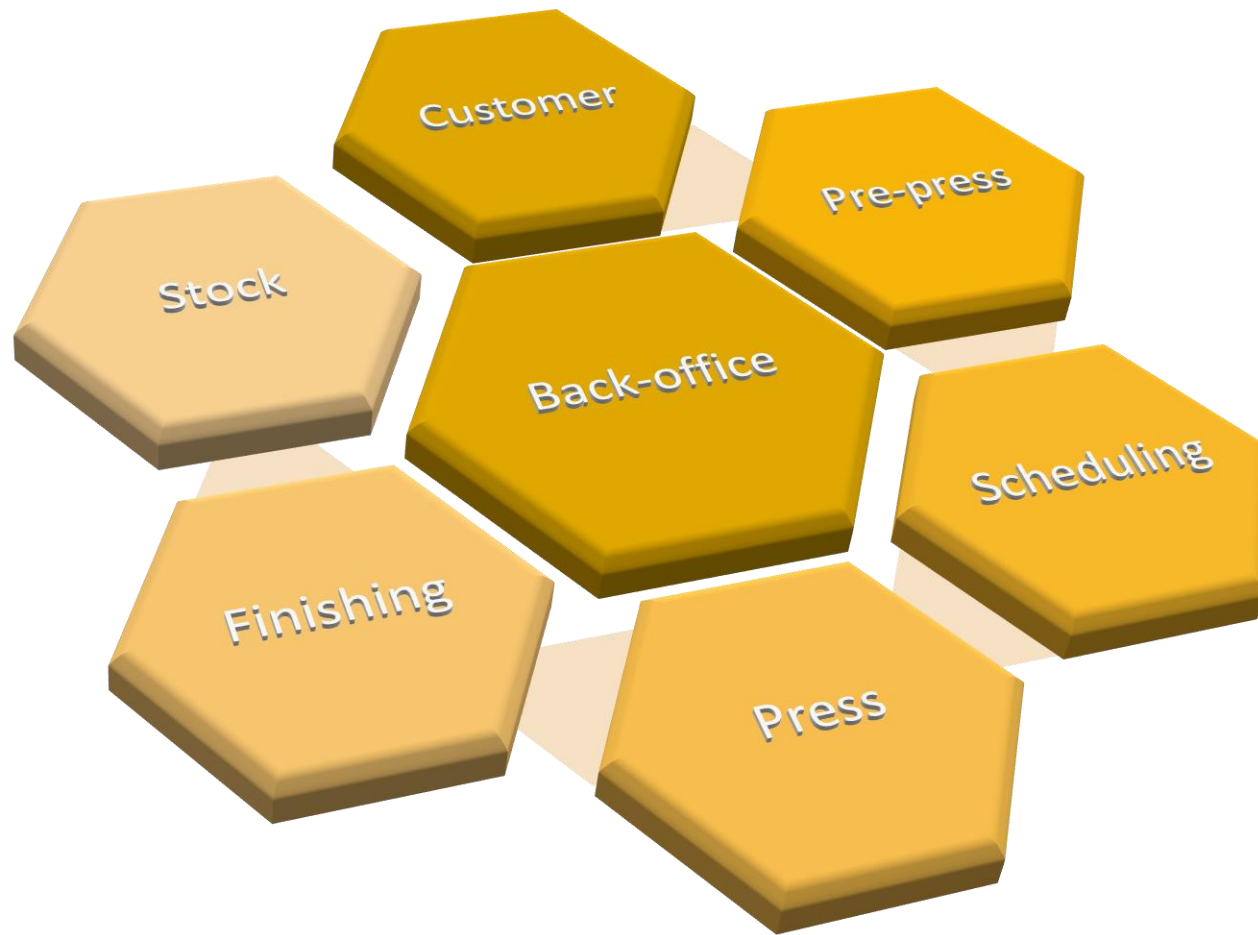
- ERP will instruct (pre)-press for S&R
 - pre-press makes printable PDF's
 - ORpress can accept S&R instructions
- ERP will instruct about LILO's
 - Number, position, content
- ERP will instruct about the order of and th



So in job preparation for finishing

- All instructions for finishing can be printed
 - Next to the labels (register marks)
 - In between the frames (LILO)
 - barcode to instruct the **laser die-cutter**
 - barcode to instruct the **slitter** (automatic knife positioning)
 - barcode to instruct **camera inspection**
- Automatic application of printed closing labels to all rolls on the turret
 - With the MIS 'traceable' ID's in barcode.

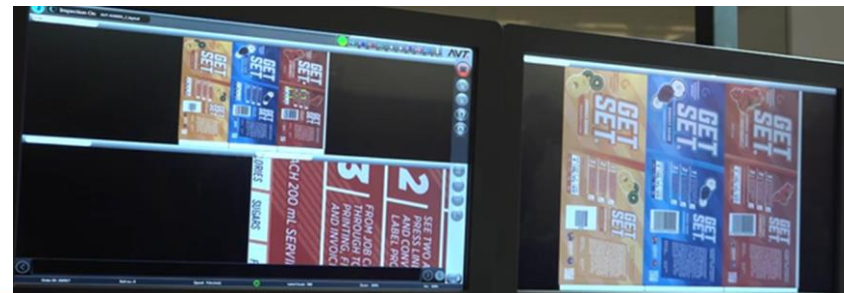




- Create data (product)
- Share data (artwork)
- Exchange statuses
- Optimize production jobs
 - Combine/Gang/Schedule
- Define quantity and order of frames
- Send instructions to all
- Print information digitally
- Identify all IN and OUT

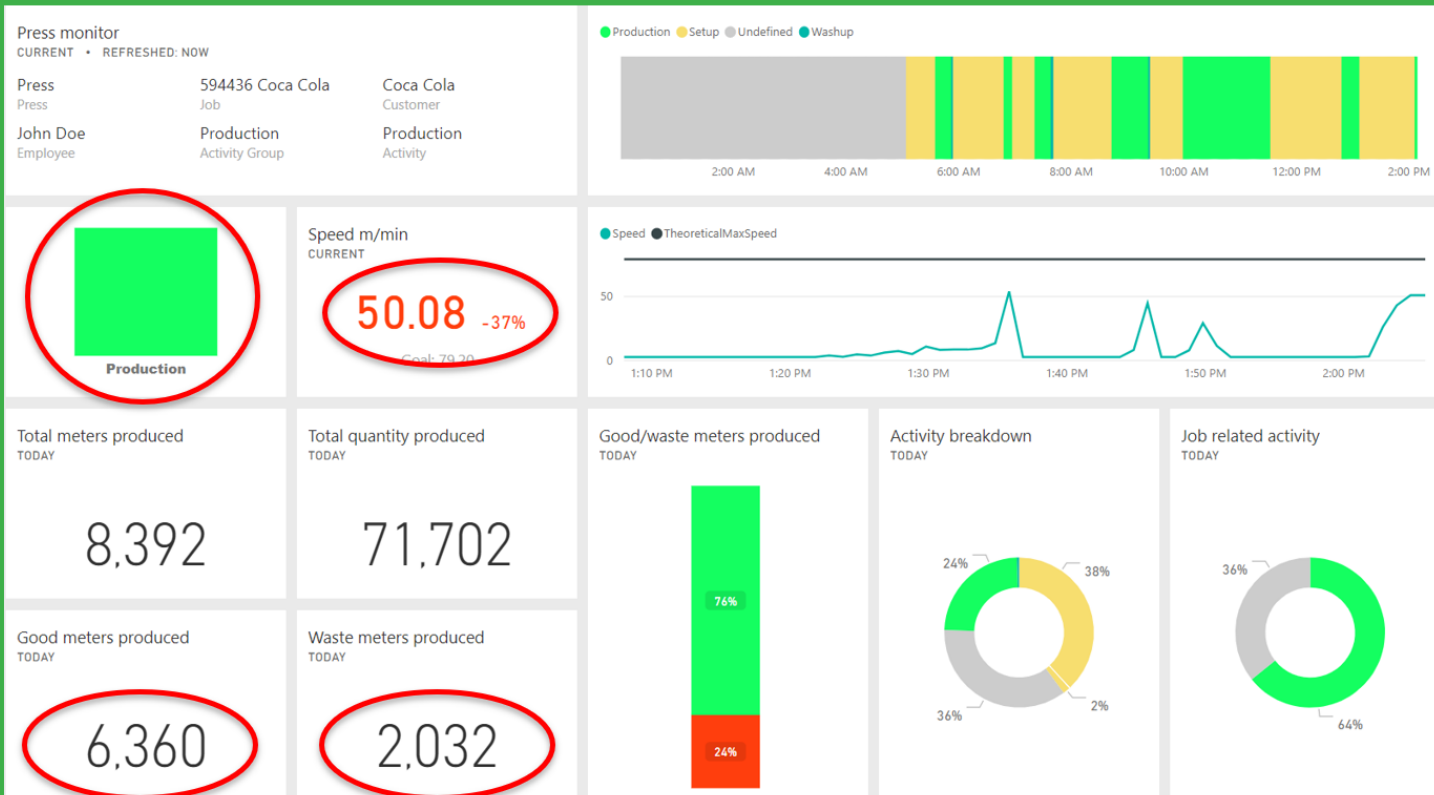
Camera inspection (CERM-ESKO-AVT)

- 1-up workflow of a **Product** prepares the artwork file for inspection
- Step&Repeat process prepares an inspection package per **Print frame ID**
- Inspection package is sent to the Camera Inspection Data Base
- Barcode of Print Frame is printed in between Frames (LILO)
- Camera detects defects during printing (compares package with reality) and stores defects per **Semi-Finished roll ID**
- The finishing machine can stop on every defect based upon the Semi-Finished roll ID scanned.

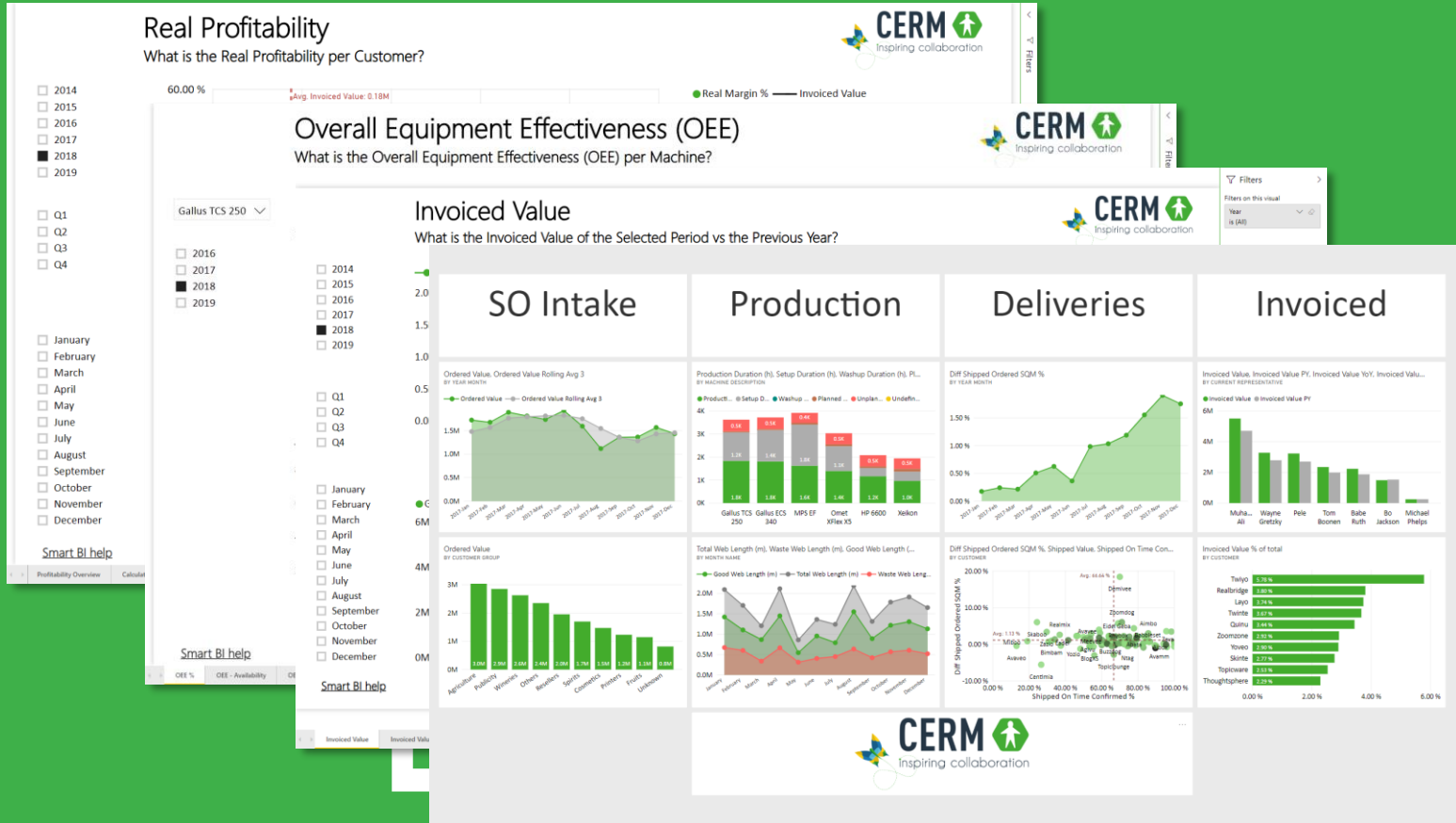


And the feedback ...

Live Monitor



Business Intelligence



Some comments

- Our customers report
 - a m² production-output-increase around 30 % with the same staff
 - a switch to higher quality labels, which increases the sales price per m² output
 - an improved lead time, less complaints, less rework
- CERM now has 300 installations in 'narrow web'
 - 70 % use MIS-prepress-automation
 - 35 % use online collaboration

We invite you to meet our partners on Label Expo



Please, send me the presentation...



Scan Me