



Prepress Systems and strategies

Geert De Proost

Director Product Management - Esko

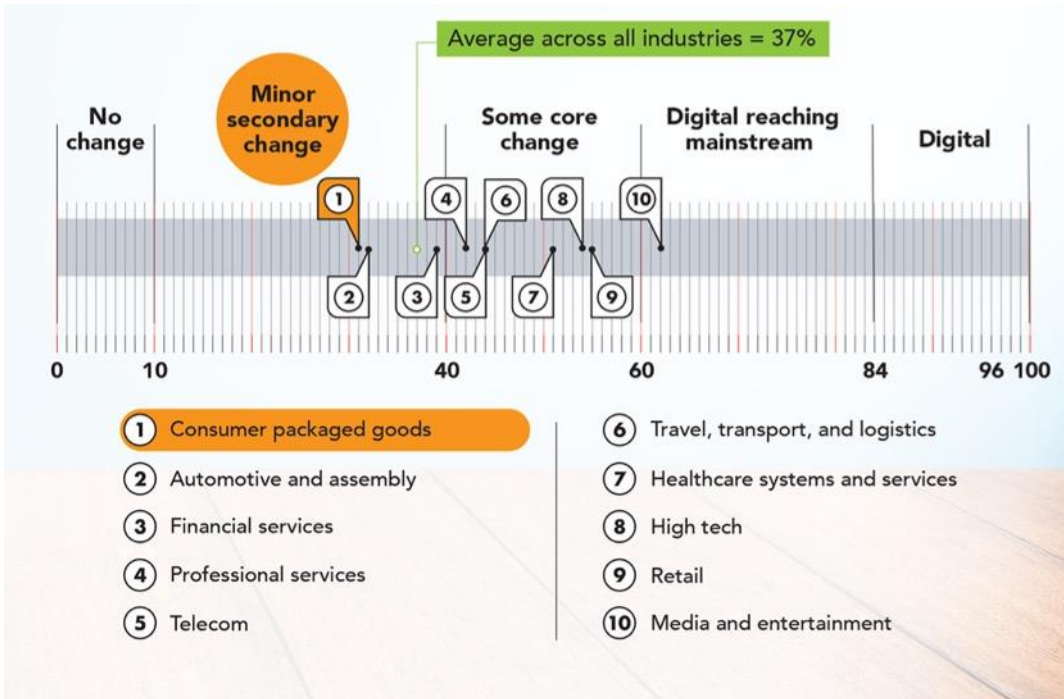


24 - 27 September • Brussels
**LABELXPO
EUROPE 2019**
www.labelexpo-europe.com



Digitization in Labels & packaging

- Level of digitization in “consumer packaged goods” lowest of the surveyed industries



So, how would you answer this question:

“If you consider your business,
across all functions and departments:
how digital is your business on a scale from 0 to
100?”

It all starts with a digital press....but the entire organization is affected



24 - 27 September • Brussels
LABELEXPO
EUROPE 2019
www.labelexpo-europe.com

Converter challenges

- More, but shorter print runs faster
- Incomplete job information
- Long approval cycles
- Inefficient manual processes
- Homegrown MIS
- Complexity of running mixed printing processes
- Poor uptime of expensive equipment

The prepress challenge

- Quality level of incoming jobs is poor and getting worse
- Complexity of incoming jobs increases to maximize shelf shout
- Zero tolerance for errors
- More jobs per day
- Shorter lead times



Preflight Incoming Jobs

- Check for missing data/parameters & immediately react to the customer
- Flag quality risks
- Automatically fix
- Stop errors from coming in

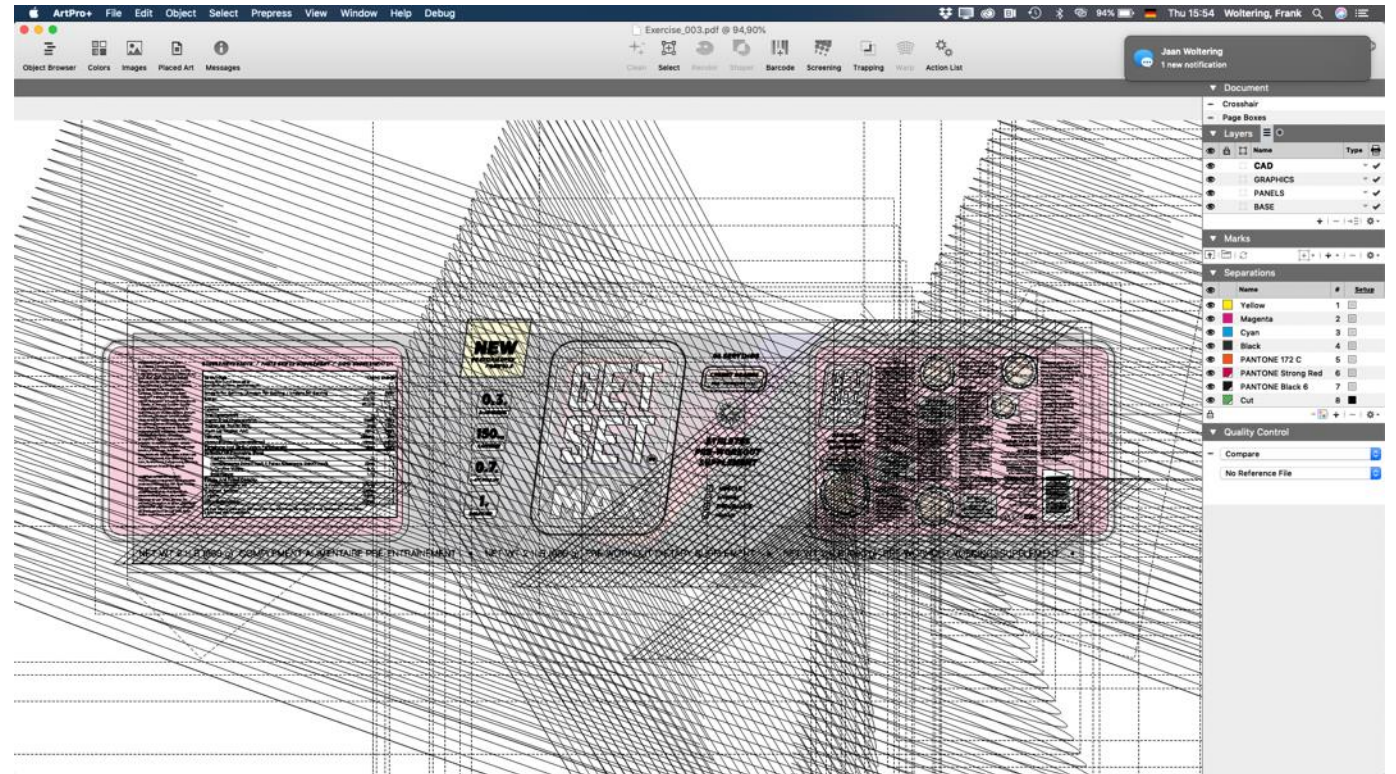


Item	Value
Color Space Page 1	CMYK
Color Space Page 1	Separation (Spot color)
Name Alternate Space CMYK values	1 ■ PANTONE 335 C CMYK [1, 0, 0.6, 0.25]
Color Space Page 1	Separation (Spot color)
Name Alternate Space CMYK values	1 ■ PANTONE 375 C CMYK [0.4, 0, 0.78, 0]
Color Space Page 1	Separation (Spot color)
Name Alternate Space CMYK values	1 ■ Cut CMYK [0.75, 0.68, 0.67, 0.9]
Color Space Page 1	Separation (Spot color)
Name Alternate Space	1 ■ PANTONE 354 C CMYK



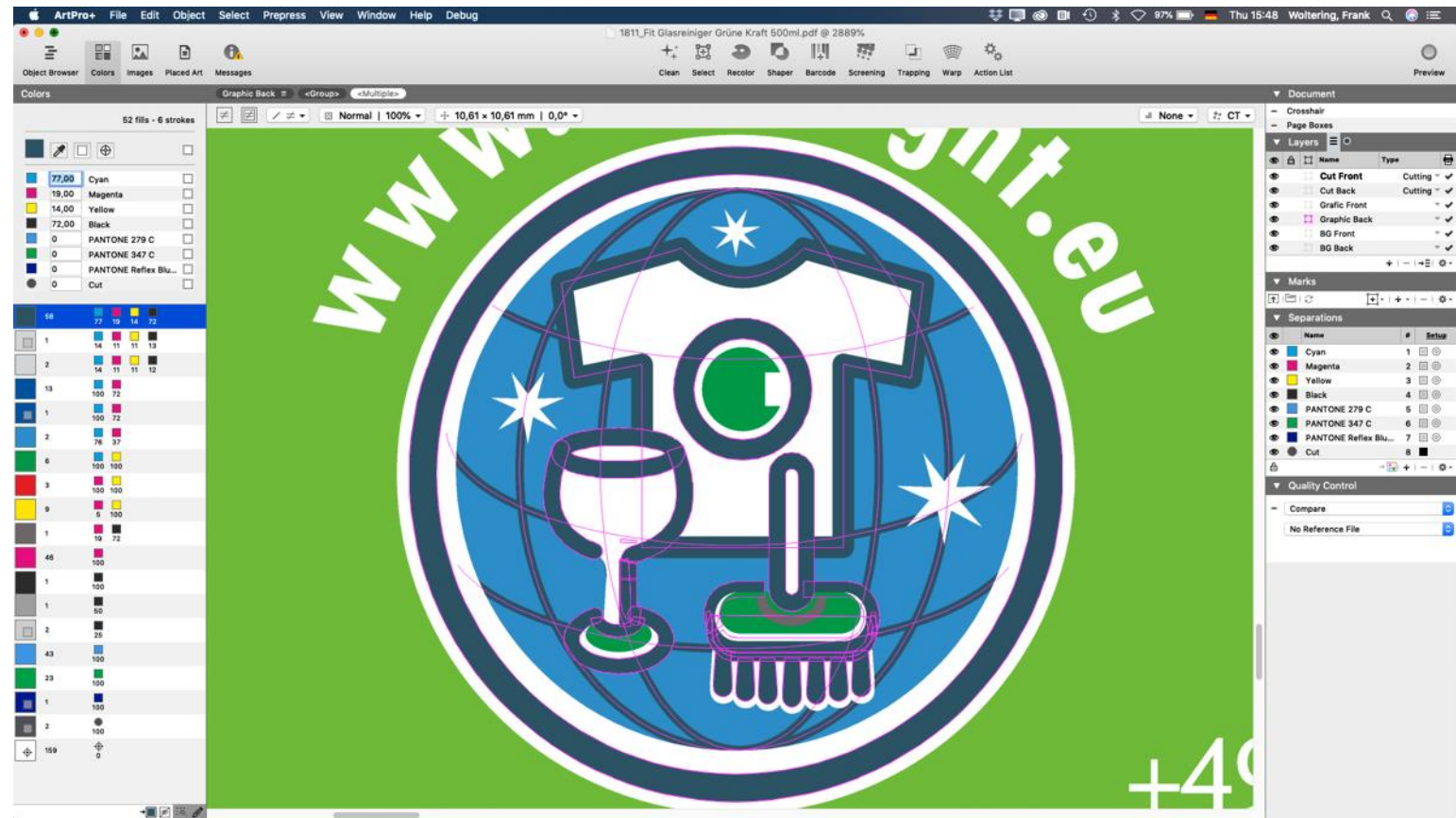
Secure Editing

- It is sooo easy to fix something and at the same time break something else
- Make sure you do not need to de-compose the file structure in order to edit.
- Make sure you touch only those objects you need to change!



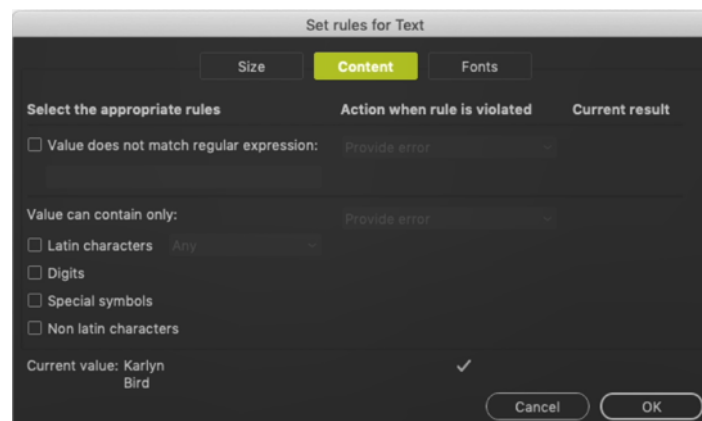
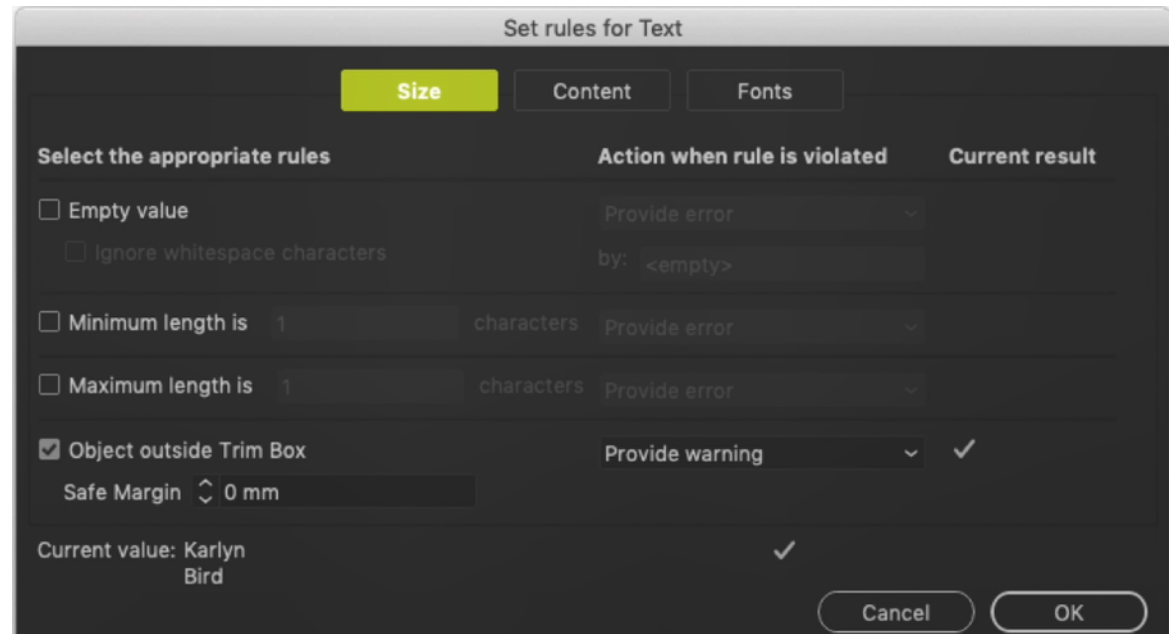
Super Fast Editing...

- The fastest edits are those that you do not need to make
- Issues with incoming color are amongst the top 3 time-consuming tasks for a prepress operator...
- ... as well the most dangerous one



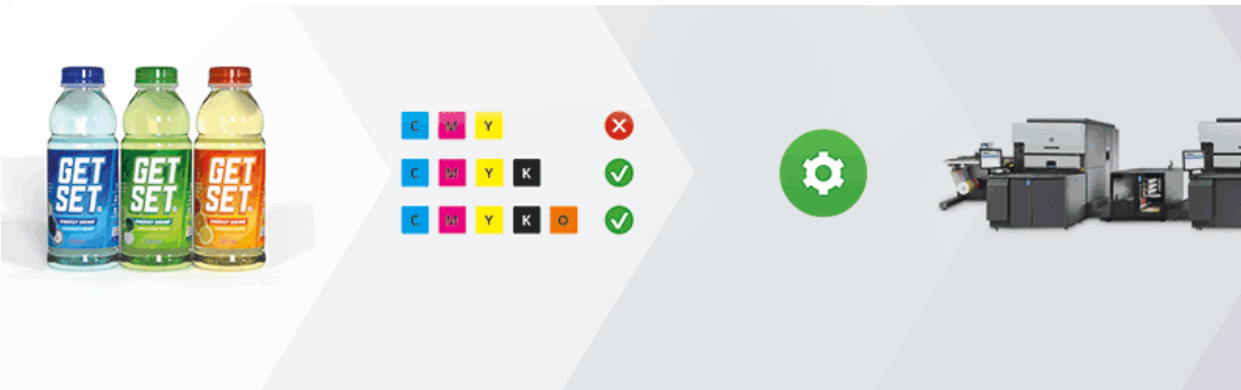
Quality Control of Variable Data Jobs

- It is hard to quality control something you only see for the first time on press
- Comprehensive preflight tools and quality control for variable data



Go-NoGo decision on color

- Verify if all colors can be achieved
- Maximize customer satisfaction
- Increase press speed (HP Indigo)
- Improve Overall Equipment Efficiency (OEE)



Color Preflight Report		ESKO*		
File Name	01_Red Wine Front.pdf		<p>✗ CMY</p> <p>✓ CMYK</p> <p>✓ CMYKOGV</p> <p><small>Check the Process Color Checks table on this page and the Spot Color Conversion table on page 2 for more info.</small></p>	
Date	29/01/2019			
Time	16:41			
Substrate	PE-WHITE			
Press	HP Indigo WS6800			
Input Inks		Process Color Checks		
Ink Name	Ink Book	Type of EPM Check	Value	EPM Compatibility
201	Pantone C	Check for black gradients		
Varnish	<unregistered>	Check for images in black		✓
		Check if the input file only contains a black ink		✓
		Check if the TAC is more than (%)	280 %	✓
		Check if the input file is missing the black ink		✓
		Check for black objects smaller than	0.35 mm	✓
		Check for black strokes thinner than	0.35 mm	✓
		Check for black text smaller than	6 pt	✓
		Check for rich black object or stroke		✓

Automation specific to digital: Lane Filling

- Multigrid layout

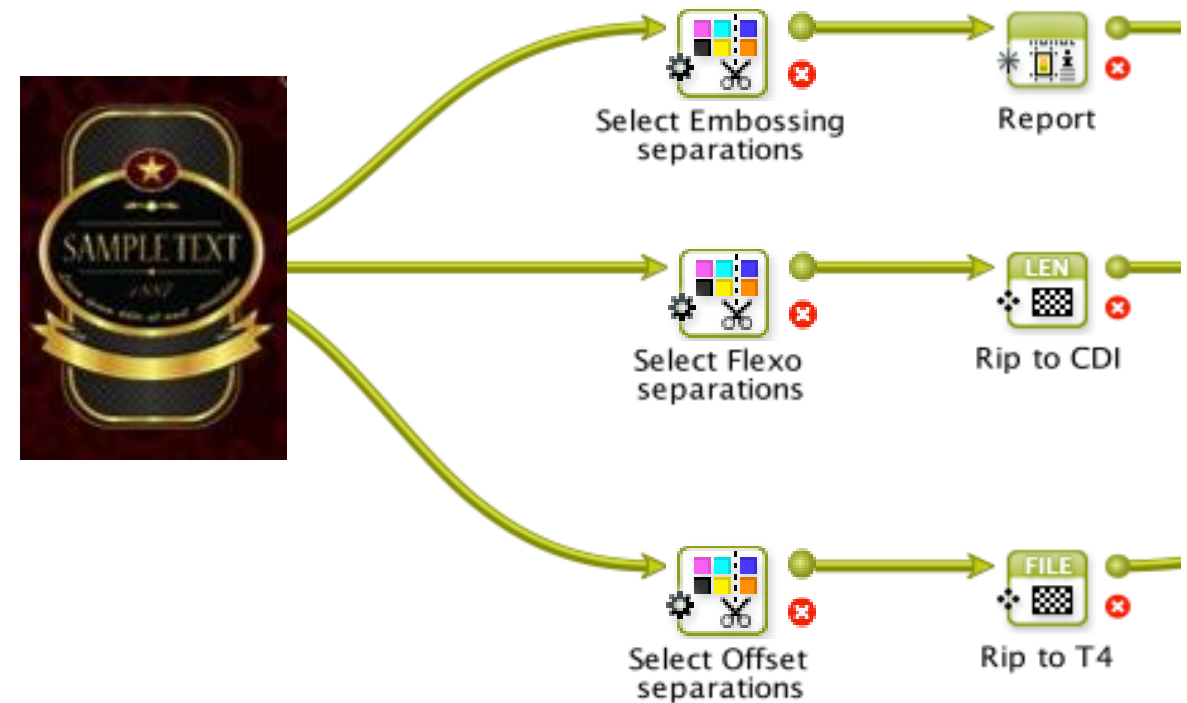
The screenshot displays a software interface for a digital automation system, titled "NEW PRODUCTION JOB UNTITLED 1". The interface is divided into several sections:

- Navigation and Status:** At the top, there are tabs for "AUTOMATION ENGINE", "TO DO 29", "PRODUCTS", and "PRODUCTION JOBS". On the right, there are buttons for "PRODUCTION CART", "ADMIN", and "demo".
- Job Configuration:** Below the title bar, there are controls for "Start Production" and "Save".
- Left Sidebar:** A vertical menu on the left contains options: "PRODUCTS & QUANTITIES", "ORDER", "OUTPUT", "PRODUCTION SETTINGS", "PRINTING SEQUENCE" (highlighted), and "PRINT FINISHES".
- Product List:** A section titled "PRODUCTS (3) 6000/6000" lists three items:
 - GET SET_BOTTLE_ORANGE:** Placed 4000/4000, with a quantity input of 2000 and a green checkmark.
 - GET SET_BOTTLE_GREEN:** Placed 1000/1000, with a quantity input of 1000 and a green checkmark.
 - GET SET_BOTTLE_BLUE:** Placed 1000/1000, with a quantity input of 1000 and a green checkmark.
- Empty Stations:** A section titled "EMPTY STATIONS" with a "Quantity" input field set to 0.
- Main Grid:** A large central area labeled "Printing Direction" and "Die Cutting Direction" shows a multigrid layout. It features three columns and two rows of colored blocks:
 - Column 1 (Blue): Labeled 'A', with a quantity of 2000.
 - Column 2 (Blue): Labeled 'A', with a quantity of 2000.
 - Column 3 (Green): Labeled 'B', with a quantity of 1000.
 - Column 3 (Purple): Labeled 'C', with a quantity of 1000.
- Right Panel:** Titled "AUTOFILL OPTIONS", it includes a "Lanes or blocks" section with a "Autofill" toggle (disabled) and a "Clear" button. Below it is a "DIE: GET SET 01" section with a grid of 10 empty slots.

Automation specific to digital: Hybrid printing

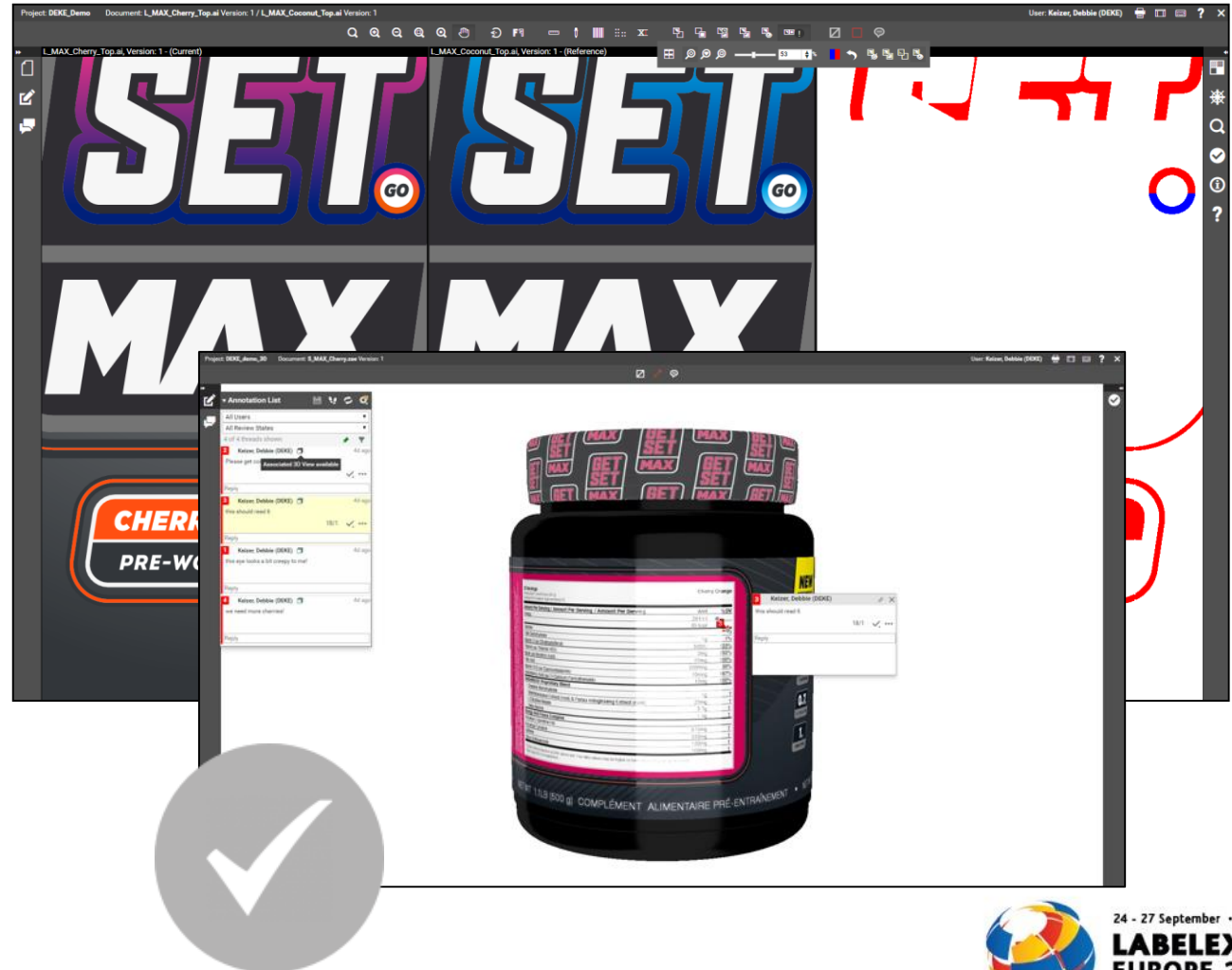
- Single source file
- Automatically applying correct parameters for the printing process
- Dramatically reduces human error

Hybrid Press support



Move to digital approval

- Reduce # of iterations
- Reduce the time to approval
- Avoid late approvals
- Clear digital trace of annotations & comments



Connecting your MIS system

Product level

- Admin info
 - job ,project identification, customer, due dates, etc..
- Technical specifications
 - Sizes - will be used in preflight to check against dimensions of the PDF to guarantee that this one is in sync with the specifications of the MIS
 - Winding
 - Substrate class
 - Intended print process
 - GTIN barcode value
 - Die shape
- Editing instructions
- Approval method

Production level

- Layout technical specifications
 - Actual production substrate
 - Size of the substrate
 - Step & repeat technical specs
 - #rows, #columns, cell sizes, gap sizes, which products to place in which lanes
- Platemaking specifications (conventional printing)
 - Plate type (dispro is calculated automatically)
- Digital press
 - Target press, press preset
 - Esko Color Strategy
 - # lead in/out pages - # of copies

So, how would you answer this question:

“If you consider your business,
across all functions and departments:
how digital is your business on a scale from 0 to
100?”



24 - 27 September • Brussels
LABELEXPO
EUROPE 2019
www.labelexpo-europe.com

The Digital Transformation Journey: what is your next step to digitization?

